



Shinwa's levels are made with accuracy within the specifications. Please use equipment with higher accuracy for work that requires greater specifications. Sensitivity means the gradient at which the air bubble starts moving. Accuracy means the tolerance of range that the air bubble indicates.

## Blue Level Pro 2



73330



73332



73333

●Parts are listed from p.274

Item Code	Description	Body Size (mm)	Weight (g)	JAN Code	Packing Unit	Packaging
73330	300 mm	300	245	4 960910 733305	6	
73331	380 mm	380	290	4 960910 733312	6	
73332	450 mm	450	330	4 960910 733329	6	
73333	600 mm	600	400	4 960910 733336	6	
73334	900 mm	900	570	4 960910 733343	6	
73335	1200 mm	1200	735	4 960910 733350	6	
73336	1500 mm	1500	905	4 960910 733367	1	
73337	1800 mm	1800	1,075	4 960910 733374	1	

\*Not available in certain areas. Please contact us for details.

## Blue Level Pro 2 with Magnet



73380



73382



73383

●Parts are listed from p.274

Item Code	Description	Body Size (mm)	Weight (g)	JAN Code	Packing Unit	Packaging
73380	300 mm	300	295	4 960910 733800	6	
73381	380 mm	380	340	4 960910 733817	6	
73382	450 mm	450	380	4 960910 733824	6	
73383	600 mm	600	475	4 960910 733831	6	
73384	900 mm	900	670	4 960910 733848	6	
73385	1200 mm	1200	860	4 960910 733855	6	
73386	1500 mm	1500	1,030	4 960910 733862	1	
73387	1800 mm	1800	1,200	4 960910 733879	1	

\*Not available in certain areas. Please contact us for details.

### Features

- With a cover to protect the horizontal vial. Cover can be removed and washed when dirty  
\*Body is not waterproof



- Horizontal vial can be adjusted as required  
\*If you remove the sealing sticker next to the horizontal vial and adjust the accuracy yourself, the accuracy we specified cannot be guaranteed. The vertical vial and 45° vial cannot be adjusted.

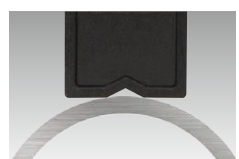
- Vial with luminous sheet for better readability
- High-visibility vial with clear blue liquid and thick white line. Horizontal vial has three base lines on both sides to measure horizontal, 1/50 and 1/100 gradients.



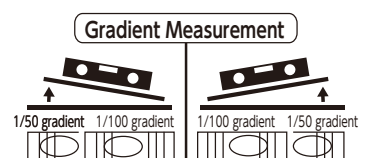
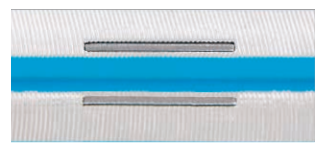
- High precision of  $\pm 1.0$  mm/m for all vials
- Large vial for easy readings
- Vertical and 45° vials



- Large side caps protect the level and material object
- V-shape groove on the measurement side for measuring pipes



- Box shape makes marking easy
- Magnetic model
- Handy for steel frame work thanks to powerful magnet with yoke



\*The size of air bubble varies depending on temperature.

### Use

- For checking horizontal and vertical alignment, and 45° of buildings, equipment, factories, etc.

### Specifications

Sensitivity, Precision	 Sensitivity 0.35 mm/m = 0.0201° Precision $\pm 1.0$ mm/m = less than $\pm 0.0573^\circ$
Material	Body: Aluminum, ABS resin, Polycarbonate resin Vial: Acrylic resin Liquid: Petroleum liquid