

## Laser ROBO X line-E

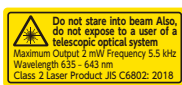
Electronic level sensor + motor



360°  
Horizontal



71610



71609



●Parts are listed from p.274

Item Code	Description	Body Size (mm)	Weight (g)	JAN Code	Packing Unit	Packaging
71610	Green	213×127×182	1,600	4 960910 716100	1	
71620	Green with Receiver and Tripod	-	-	4 960910 716209		
71609	Red	213×127×182	1,600	4 960910 716094		
71619	Red with Receiver and Tripod	-	-	4 960910 716193		

## Laser ROBO X line

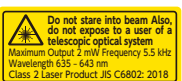
Pendulum + magnetic damper



360°  
Horizontal



71608



71607



●Parts are listed from p.274

Item Code	Description	Body Size (mm)	Weight (g)	JAN Code	Packing Unit	Packaging
71608	Green	188×127×182	1,450	4 960910 716087	1	
71618	Green with Receiver and Tripod	-	-	4 960910 716186		
71607	Red	188×127×182	1,450	4 960910 716070		
71617	Red with Receiver and Tripod	-	-	4 960910 716179		

### Features

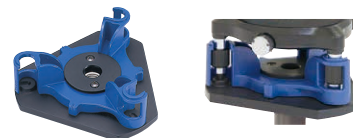
- Adoption of a cone mirror enables 360° irradiation\* with one light source. Greatly improves work efficiency since there is no need to rotate the main body.  
\*Case corners will partially obstruct laser line.
- 360° full line crosses the 90° line, forming ceiling marking/ground marking
- Since the ground marking cross lines can be irradiated, can be used for inside corners from 10 mm, and outside corners from 0 mm
- Separating makes it easier to mark in lower positions, easier to carry, and further improves usability



- All models feature a convenient fixed line mode for shining a line diagonally



- Includes Level adjustment tripod adapter that makes it easy to adjust level when using a tripod



- Can be adjusted to a precise reference with rotary fine-adjustment knob capable of 360° rotation
- Dust/Waterproof structure IP54 (when using batteries)

### Use

- For standardization of construction sites, interior work, stone, etc.
- For one-person operation and labor saving
- For referencing at high-rise buildings and other sites with much vibration (X line-E)

### Specifications

- Mentioned on page 144

\*Laser light depicted is an illustration.

### Accessories



### Receiver and Tripod Set Items

