

Laser ROBO LEXIA-E



(51 AR model)

(51 AR model)

Electronic level sensor + motor



70887

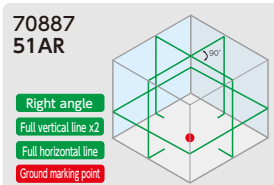


70885

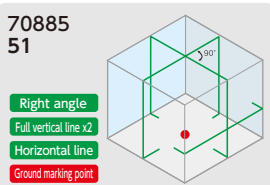


Lineup

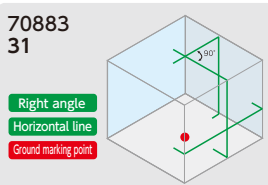
70887
51AR



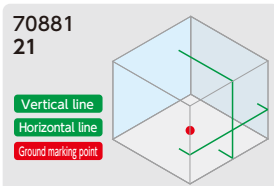
70885
51



70883
31



70881
21

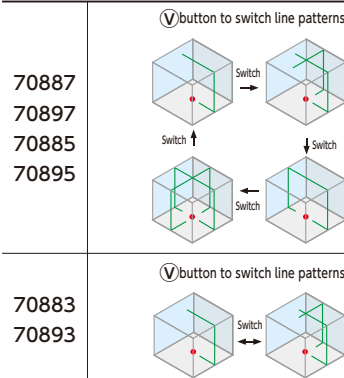


●Parts are listed from p.274

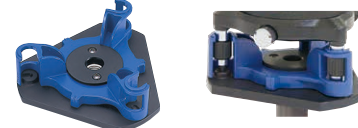
Item Code	Description	Body Size (mm)	Weight (g)	JAN Code	Packing Unit	Packaging
70887	51AR Green	190x128x128	1,250	4 960910 708877	1	
70897	51AR Green with Receiver and Tripod	-	-	4 960910 708976		
70885	51 Green	173x128x128	1,200	4 960910 708853		
70895	51 Green with Receiver and Tripod	-	-	4 960910 708952		
70883	31 Green	173x128x128	1,200	4 960910 708839		
70893	31 Green with Receiver and Tripod	-	-	4 960910 708938		
70881	21 Green	173x128x128	1,200	4 960910 708815		
70891	21 Green with Receiver and Tripod	-	-	4 960910 708914		

Features

- Uses a Electronic level sensor + motor system that is resistant to strong vibrations
- Highly visible green laser
- Enables irradiation at an angle without tilting tripod
- Enables changing exposure only to necessary lines for horizontal circumference, full vertical and triangle-shape projection to reduce power consumption (except 21)



- Includes Level adjustment tripod adapter that makes it easy to adjust level when using a tripod



- Can be adjusted to a precise reference with rotary fine-adjustment knob capable of 360° rotation
- Inclination is automatically corrected up to $\pm 2.5^\circ$
- Dust/Waterproof structure IP54

LEXIA-E AR

- Rotary plate is removable for irradiation at a lower position (approx. 15 mm high)
- By irradiating with a full horizontal line, there is no need to rotate the main body, which greatly improves work efficiency
- Cone mirror enables 360° irradiation* for a full horizontal line without rotating the main body

*Case corners will partially obstruct laser line.

Use

- For setting standards at construction sites, interior work, etc.
- For one-person work and labor saving
- For referencing at high-rise buildings and other sites with much vibration (LEXIA-E)

Specifications

- Mentioned on page 144

*Laser depicted is an illustration.

Accessories



Receiver and Tripod Set Items



*Only available in medium mode