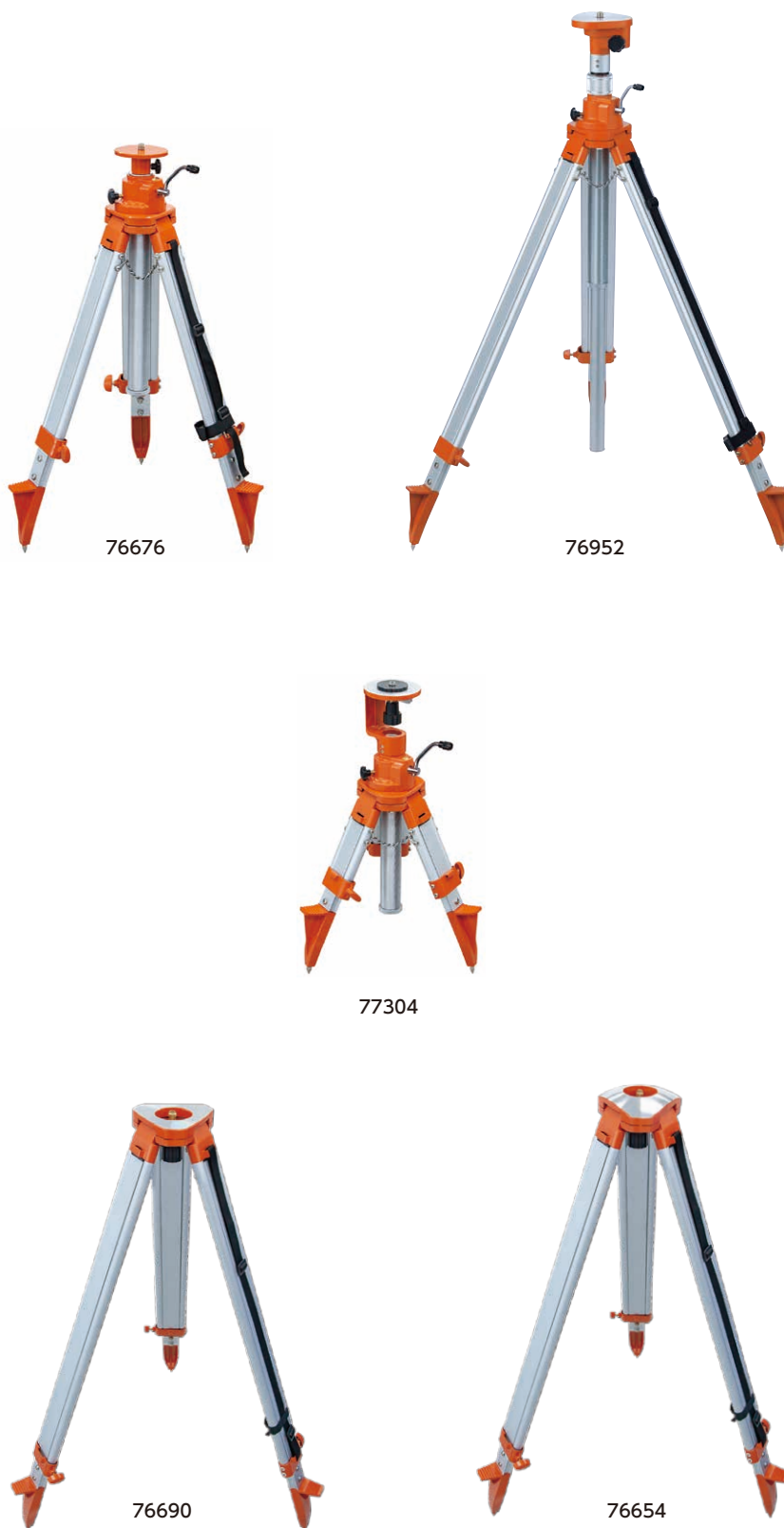


Tripod



Item Code	Description	Body Size (mm)	Weight (g)	JAN Code	Packing Unit	Packaging
76676	1.5 m with Handle	931×185×185	5,100	4 960910 766761	1	
76952	3 m with Handle	1,280×180×180	6,670	4 960910 769526		
77304	Short Model	560×180×180	4,580	4 960910 773042		
76690	Flat Head	1,025×180×180	3,695	4 960910 766907		
76654	Spherical Head	1,040×180×180	3,815	4 960910 766549		

●Parts are listed from p.274

Features

- Tripod legs have hard tips for stable use on ground or soil
- 1.5 m with Handle
 - Height can extend to 350 mm



- 3 m with Handle
 - 2 level elevating model for a height of up to 3 m



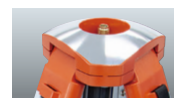
- Short Model
 - Easy fine-adjustment with 77304 Short Model adjust up to 30 mm diameter
 - Ground marking point can be exposed



- Flat Head
 - Flat mounting area is firm and stable



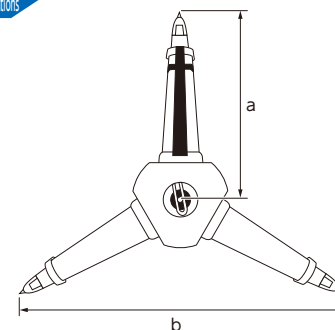
- Spherical Head
 - Rounded mounting area allows for quick horizontal fine-tuning



Use

- For height adjustment of laser and optical equipment outdoors, such as at civil engineering sites

Specifications



Item Code	76676	76952	77304
Elevator Ascent and Descent Range	350 mm	1,160 mm	285 mm
Range of Use in Height	710 - 1,500 mm	1,060 - 3,000 mm	535 - 920 mm
Part Sizes* a	665 mm	1,080 mm	330 mm
b	1,200 mm	1,835 mm	535 mm
Ground marking point exposure	—		○
Installation Screw	5/8 inch		
Material	Aluminum, iron		

Item Code	76690	76654
Elevator Ascent and Descent Range	—	
Range of Use in Height	930 - 1,560 mm	
Part Sizes* a	1,130 mm	
b	1,900 mm	
Ground marking point exposure	—	
Installation Screw	5/8 inch	
Material	Aluminum, iron	

*Maximum expanded size where the tripod is stable and grounded.